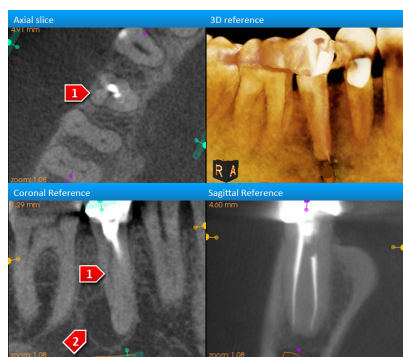
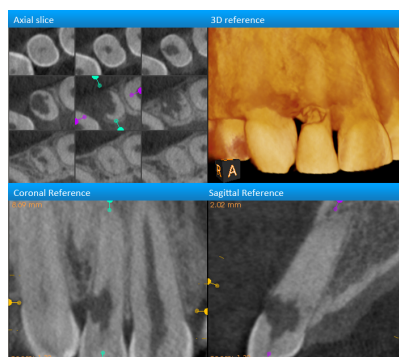


## Some examples of indications for cone beam CT scans at Canary



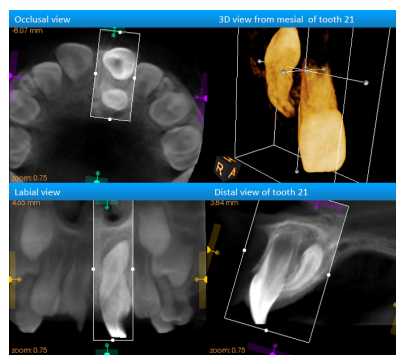
### Endodontics

High-resolution small field scans are suitable for detecting missed canals, secondary signs of root fracture and perforations.



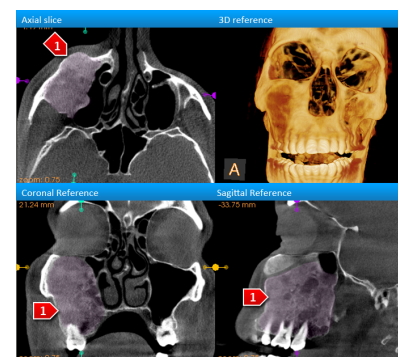
### Root resorption

Cone beam CT offers an unparalleled means of evaluating internal and external root resorption



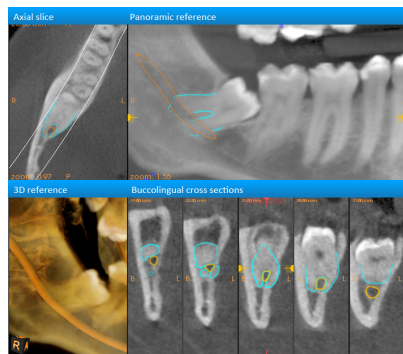
### Impacted teeth

CBCT provides a clear visualization of impacted maxillary canines or supernumerary teeth.



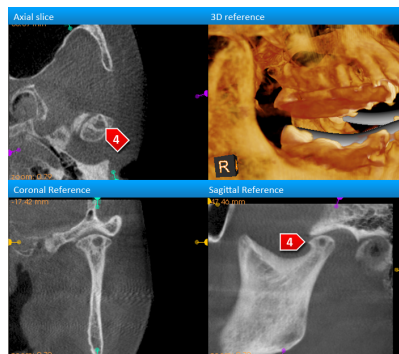
### Bone pathology

The evaluation of the extent of bony pathologic lesions is improved with CBCT.



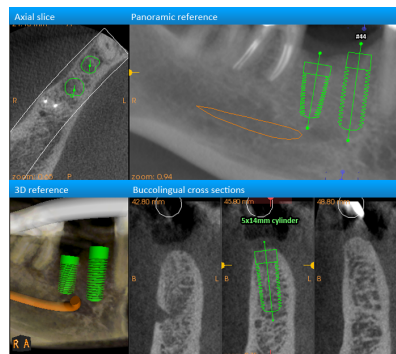
### Wisdom teeth

For mandibular molars that are in close proximity to the inferior alveolar nerve canal, CBCT provides a pre-surgical evaluation of the risk level.



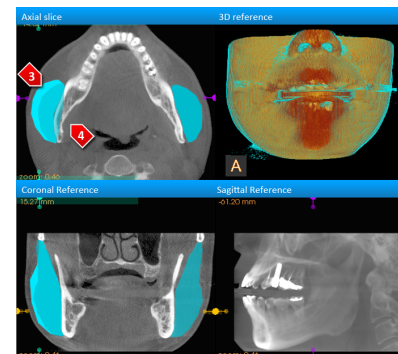
### Temporomandibular Joints

The TMJs can be evaluated for signs of degenerative joint disease, and when coupled with a clinical exam, can provide an indication of the state of the articular disc.



### Implant planning

At our prices, can you really afford to not get a scan prior to implant placement? We also offer support for computer-guided surgeries and planning.



### No-hassle policy

If something is not to your liking, let us know and we'll do what it takes to get you the results you want.